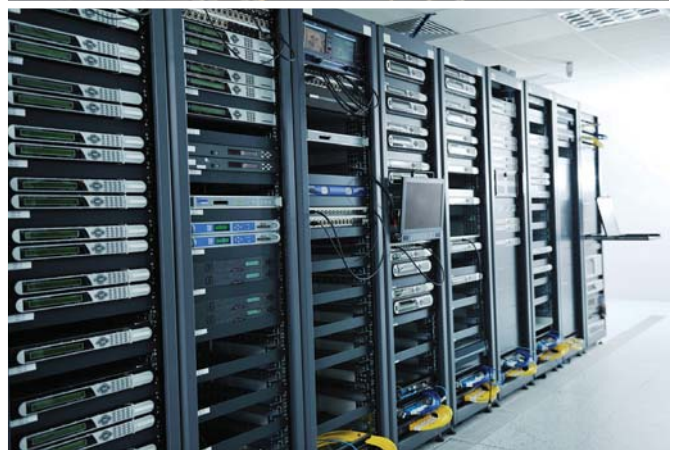


## On Line Uninterruptible Power Supply

### ARTon Alfa Series 6-10 kVA



### Specifications

- **Output power factor 1**
- **True double-conversion**
- **Microprocessor control optimizes reliability**
- **Excellent efficiency and output performance**
- **Wide input voltage (110 V – 300 V)**
- **N+X parallel redundancy (optional)**
- Adjustable battery numbers
- 50/60Hz frequency converter mode
- ECO mode energy saving
- Emergency power off (EPO) function
- High overload capability
- Smart SNMP works well with either USB or RS-232 together

General Application Areas:



Finance



Medical



Industry



Datacenter



# ARTon Alfa Series 6-10 kVA Technical Specifications

MODEL		ARTon Alfa 6 kVA	ARTon Alfa 10 kVA
Phase		Single phase with neutral and ground	
Capacity (VA/Watt)*		6000 VA / 6000 W	10000 VA / 10000 W
<b>Input</b>			
Nominal Voltage		208 / 220 / 230 / 240 VAC (Derate capacity to 60% of capacity in CVCF mode and to 90% when the output voltage is adjusted to 208VAC)	
Voltage Range		110-300 VAC @ [0-60%] Load 140-300 VAC @ [60-80%] Load 176-300 VAC @ [80-100%] Load	
Frequency Range		46-54 Hz@ 50Hz / 56-64 Hz@ 60Hz	
Power Factor		≥ 0.99 @ full load	
THDi %		< 5% @ 100% Load, < 10% @ 50% Load	
<b>Output</b>			
Output Voltage		208 / 220 / 230 / 240 VAC	
AC Voltage Regulation		±1%	
Frequency Range (Synchronized Range)		46-54 Hz@ 50Hz / 56-64 Hz@ 60Hz	
Frequency Range (Batt. Mode)		50 Hz ± 0.1 Hz or 60Hz ± 0.1 Hz	
Current Crest Ratio		3:1	
Harmonic Distortion		2 % THD (linear Load), 5 % THD (non-linear Load)	
Transfer Time	AC to Battery	Zero	
	Inverter to Bypass	Zero	
	ECO to Battery Mode	< 10 ms	
Waveform (Batt. Mode)		Pure Sinewave	
Over Load	AC Mode	100% ~ 110%: 10min, / 110% ~ 130%: 1min, > 130% : 1sec	
	Battery Mode	100% ~ 110%: 30sec, 110% ~ 130%: 10sec, >130% : 1sec	
<b>Efficiency</b>			
AC Mode		94 %	
Battery Mode		91 %	
<b>Battery</b>			
Standard Model	Battery Type	12 V / 7 Ah	12 V / 9 Ah
	Numbers	20 batteries standard (16 ~ 20 adjustable, When using batteries from 16-19, the unit will de-rate according to below formula: P=Prating x N/20)	
	Recharge Time	2-9 hours recover to 90% capacity	
	Charging Current	1.0A (adjustable up to 4.0A)	
	Charging Voltage	13.65*battery Number VDC ± 1%	
<b>Indicators</b>			
LCD		UPS status, load level, battery level, input/output voltage, discharge timer and fault conditions	
LED		Four LEDs indicating UPS status, load level, battery level, overload, fault	
<b>Alarm</b>			
Battery Mode		Sounding every 4 seconds	
Low Battery		Sounding every seconds	
Overload		Sounding twice every seconds	
Bypass Mode		Sounding every 2 seconds	
Fault		Continuously sounding	
<b>Physical</b>			
Standard Model with bat.	Dimension, D x W x H	442 x 190 x 688 (mm)	
	Net Weight (kgs)	54	66
<b>Environment</b>			
Operation Humidity		20-90 % RH@ 0-40°C (non-condensing)	
Noise Level		Less than 55dBA @ 1 meter	Less than 58dBA @ 1 meter
Altitude		If the UPS is installed or used in a place where the altitude is above than 1000m, the output power must be derated one percent per 100m.	
<b>Management</b>			
Smart RS-232 or USB		Supports Windows® 2000/2003/XP/Vista/2008/7/8, Linux, Unix and MAC	
Optional SNMP		Power management from SNMP manager and web browser	

\*Product specifications are subject to change without further notice to third parties. © ARTronic Elektronik San. Müm. Tic.A.Ş.

\* Derate capacity to 60% of capacity in CVCF mode and to 90% when the output voltage is adjusted to 208VAC.

When using batteries from 16-19, the unit will de-rate according to below formula: P=Prating x N/20



# ARTronic®

The art of electronics

Phone: +90 (216) 365 82 21 / Fax: +90 (216) 592 44 40

artronic@artronic.com.tr [www.artronic.com.tr](http://www.artronic.com.tr)