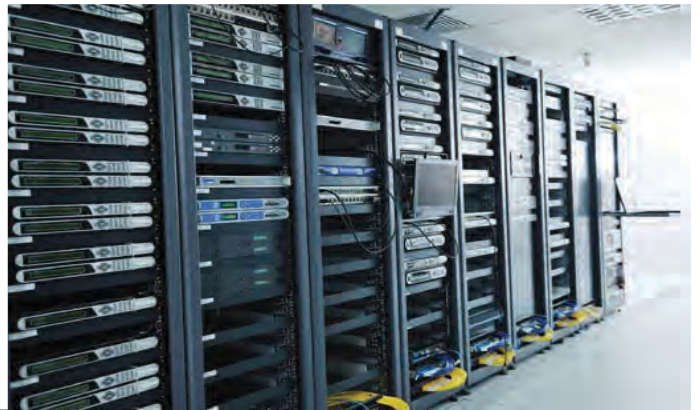


ARTronic[®]UPS

On Line Uninterruptible Power Supply

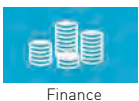
ARTon Alfa Pro Series 10/15/20/40/80 kVA



Specifications

- Output power factor 1.0 for 10~80 kVA
- True double conversion
- DSP technology guarantees high reliability
- Active power factor correction in all phases
- Maintenance bypass available
- Smart battery charger design to optimize battery performance
- Adjustable battery design (32~40 pcs.)
- 50Hz/60Hz frequency converter mode
- ECO mode operation for energy saving
- Emergency power off function (EPO)
- Parallel up to 6 units with common battery pack
- Adjustable charging current
- Graphical Touchscreen LCD

General Application Areas:



ARTon Alfa Pro Series 10/15/20/40/80 kVA Technical Specifications

MODEL	ARTon Alfa Pro 10	ARTon Alfa Pro 10 *	ARTon Alfa Pro 15 *	ARTon Alfa Pro 20 *	ARTon Alfa Pro 40	ARTon Alfa Pro 80	
Capacity [kVA]	10 kVA	10 kVA	15 kVA	20 kVA	40 kVA	80 kVA	
Capacity [kW]	9 kW	10 kW	15 kW	20 kW	40 kW	80 kW	
Parallel Capacity	6						
Input							
Nominal Voltage	3 x 380/400/415 (3F + N)						
Voltage Range	-30% & +20%						
Frequency Range	40-70Hz						
Power Factor	≥0.99 @ 100% load						
Harmonic Distortion	≤%3 full load						
Output							
Output Voltage	3 x 360*/380/400/415 VAC (3Ph+N)						
AC Voltage Regulation	± 1%						
Frequency Range [Sync.Range]	46-54Hz or 56-64Hz						
Frequency Range [Batt. Mode]	50 Hz ± 0.1 Hz or 60 Hz ± 0.1 Hz						
Current Crest Ratio	3:1 [max]						
Harmonic Distortion	≤ 1 % THD [Linear Load] ≤ 3 % THD [Non Linear Load]						
Transfer Time	AC mode to Batt.	zero					
	Inverter to Bypass	zero					
Overload	AC Mode	100 -110% for 60 min., 111-125% for 10 min, 126%-150% for 1 min; →150% or 400ms					
Efficiency							
AC Mode	% 96						
ECO Mode	% 99						
Battery Mode	% 96						
Battery							
Standard Model	Battery Type	12 V / 9Ah					
	Typical Recharge Time	9 hours recover to %90 capacity					
	Numbers	16 pcs	(10+10) pcs x1	(16 + 16) pcs x1 strings	(16 + 16) pcs x2 strings	N/A	
	Charging Voltage	+/-218.4 VDC ± 1%	+/-136.5 VDC ± 10%	+/-218 VDC ± 10%			
	Charging Current [max.]	1 A	1A~12A (Adjustable)			1A~16A Adjustable	
Long-Run Model	Numbers	16-20 pcs (Adjustable)	± 10 pcs	+/- 16pcs ~20pcs (Adjustable)			
	Charging Current [max.]	4 A	1A~12A (Adjustable)			1A~16A (Adjustable)	
	Charging Voltage	273 VDC ± 1% [20 pcs. battery]	+/-13.65V x N [N= 16-20]				
Indicators							
LCD Display	UPS status, load level, battery level, Input/Output voltage, discharge timer and fault conditions						
Physical							
Standard Model	Dimensions DxWxH (mm)	592 x 250 x 826	630 x 250 x 826			815 x 300 x 1000	N/A
	Net Weight (kg)	96	124	139		250	
Long-run Model	Dimensions DxWxH (mm)	592 x 250 x 576	630 x 250 x 826			815 x 300 x 1000	790 x 360 x 1010
	Net Weight (kg)	32	28	43		67	113
Environment							
Operation Temperature	0-40°C						
Operation Humidity	<95% and non-condensing						
Noise Level [From 1meter]	Less than 60 dB @ 1 meter			Less than 63 dB @ 1 meter		Less than 65 dB @ 1 meter	
Management							
Smart RS232 / USB	Supports Windows® 2000/2003/XP/Vista/2008, Windows® 7/8/10, Linux and MAC						
SNMP [Optional]	Power management from SNMP manager and web browser						

*If output voltage is set as 3x360VAC, the output power of the unit will be de-rated to 90%
Product specifications are subject to change without further notice by ARTronic.

ARTronic®

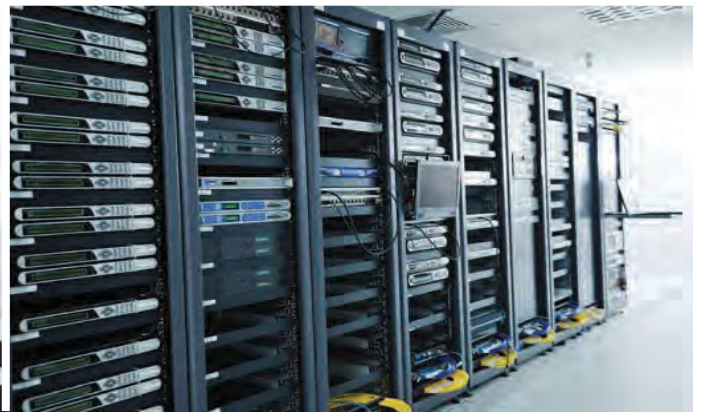
The art of electronics

Tel: +90 (216) 365 82 21 / Faks: +90 (216) 592 44 40

artronic@artronic.com.tr www.artronic.com.tr

On Line Uninterruptible Power Supply

ARTon Alfa Pro Series 30/60/100/120/180/200 kVA



Specifications

- Common mode noise rejection
- Optional isolation transformer offers full isolation and complete performance
- 3-stage extendable charging design for optimized battery
- Maintenance bypass available
- Adjustable battery numbers
- Generator compatible
- Power walk-in function
- Parallel operation up to 4 units with common battery
- Dual AC inputs
- Emergency power off function (EPO)
- Active power factor correction in all phases
- Front access design for easy maintenance
- Pluggable power module design
- Output power factor 1.0
- DSP technology guarantees high performance

General Application Areas:



Finance



Medical



Industry



IT



Energy



Construction



100/120/180/200 30/60

ARTon Alfa Pro Series 30/60/100/120/180/200 kVA Technical Specifications

MODEL	ARTon 30	ARTon 60	ARTon 100	ARTon 120	ARTon 180	ARTon 200
PHASE	3-phase in / 3-phase out					
CAPACITY	30KVA / 30KW	60KVA / 60KW	100KVA / 100KW	120KVA / 120KW	180KVA / 180KW	200KVA / 200KW
PARALLEL CAPABILITY	4					
INPUT						
Nominal Voltage	3 x 360/380/400/415 VAC (3Ph+N)					
Voltage Range	110-300 VAC @ 50% load ; 176-276 VAC @ 100% load					
Frequency Range	40~70 Hz					
Power Factor	≥ 0.99 @ 100% load					
Harmonic Distortion (THDi)	< 4% at full linear load					
OUTPUT						
Output Voltage	3 x 360*/380*/400/415 VAC (3Ph+N)					
AC Voltage Regulation (Batt. Mode)	± 1%					
Frequency Range (Synchronized Range)	46~54Hz or 56~64Hz					
Frequency Range (Batt. Mode)	50/60 Hz ± 1%					
Current Crest Ratio	3:1 (max.)					
Harmonic Distortion	☒ 2 % THD (Linear Load) ; ☒ 5 % THD (Non-linear Load)					
Transfer Time	AC mode to Battery mode	Zero				
	Inverter to Bypass	Zero				
Waveform (Batt. Mode)	Pure Sinewave					
Overload Capability	100-110% for 60 min, 111-125% for 10 min, 126%~150% for 1 min; >150% immediately shutdown					
BYPASS						
Nominal Voltage	3 x 360/380/400/415 VAC (3Ph+N)					
Voltage Range	305VAC~457VAC					
Frequency Range (Synchronized Range)	46~54Hz or 56~64Hz					
Overload Capability	> 130% 1 minute (default) ; Continuously working until breaker protection (optional)					
EFFICIENCY						
AC Mode	96%		94.8%			
ECO Mode	99%		98.5%			
Battery Mode	96%		93.8%			
BATTERY						
Battery Type	Depending on application					
Battery Numbers	32~40 pcs (Adjustable)					
Charging Current (max.)	1A~12A, Adjustable	2-24A, Adjustable	2-36A, Adjustable		3-54A, Adjustable	
Charging Voltage	+/-13.65V*N (N = 16~20)					
INDICATORS						
Touch color LCD Panel	UPS status, Load level, Battery level, Input/Output voltage, Discharge timer, and Fault conditions					
PHYSICAL						
Dimension, D x W x H (mm)	815 x 300 x 1000	790 x 360 x 1010	974 x 600 x 1600			
Net Weight (Kgs)	60	108	241	286	286	382
ENVIRONMENT						
Operating Temperature	0-40°C					
Operating Humidity	< 95 % and non-condensing					
Altitude**	0 ~ 1000m at full load					
Noise Level	Less than 63dB @ 1 Meter	Less than 70 dB @ 1 Meter	Less than 75 dB @ 1 Meter			
MANAGEMENT						
Smart RS-232/USB	Supports Windows® 2000/2003/XP/Vista/2008, Windows® 7/8, Linux and MAC					
Optional SNMP	Power management from SNMP manager and web browser					

*When output voltage is set as 3 x 360VAC or 3 x 380VAC, the output power of the unit will be de-rated to 90% .

**If the UPS is installed or used in a place where the altitude is higher than maximum height, the output power will be derated 1% per 100m. Product specifications are subject to change without further notice.

ARTronic®

The art of electronics

Tel: +90 (216) 365 82 21 / Faks: +90 (216) 592 44 40

artronic@artronic.com.tr www.artronic.com.tr