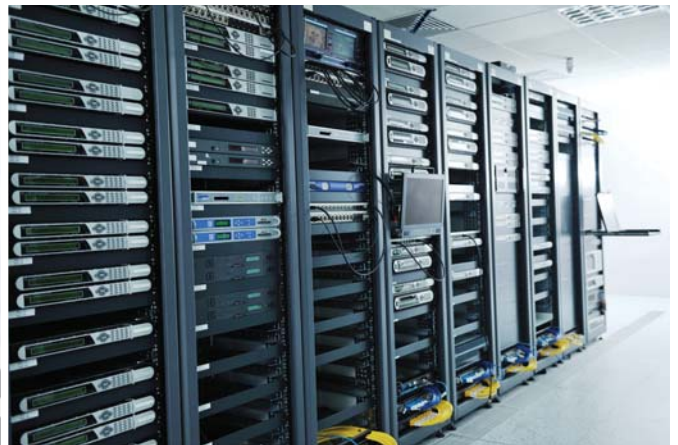


## On Line Uninterruptible Power Supply

### ARTon Beta Series 6-10 kVA



### Specifications

- True double conversion wide input voltage (110 ~ 300V)
- Smart fan-speed control design
- Eco mode energy saving
- Optional powerful charger for battery backup extension.
- Adjustable battery number
- Common battery for parallel operation



General Application Areas:



Finance



Medical



Industry



Datacenter

# ARTon Beta Series 6-10 kVA Technical Specifications

MODEL		ARTon Beta 6 kVA	ARTon Beta 10 kVA
Capacity (VA/Watt)*		6000 VA / 4800 W	10000 VA / 8000 W
Input			
Voltage Range	Low Line Loss	110 VAC $\pm$ 3 % at 50% Load; 176 VAC $\pm$ 3 % at 100% Load	
	Low Line Comeback	Low Line Loss Voltage + 10V	
	High Line Loss	300 VAC $\pm$ 3 %	
	High Line Comeback	High Line Loss Voltage - 10V	
Frequency Range		46Hz ~ 54 Hz @ 50Hz system / 56Hz ~ 64 Hz @ 60Hz system	
Phase		Single phase with neutral and ground	
Power Factor		$\geq$ 0.99 at 100% load	
Output			
Output Voltage		208 / 220 / 230 / 240 VAC (Derate capacity to 60% of capacity in CVCF mode and to 90% when the output voltage is adjusted to 208VAC)	
AC Voltage Regulation		$\pm$ 1%	
Frequency Range (Synchronized Range)		46Hz ~ 54 Hz @ 50Hz system / 56Hz ~ 64 Hz @ 60Hz system	
Frequency Range (Batt. Mode)		50 Hz $\pm$ 0.1 Hz or 60Hz $\pm$ 0.1 Hz	
Overload	AC mode	100% ~ 110%: 30min; 110% ~ 130%: 5min; >130% : 10sec	
	Battery mode	100% ~ 110%: 3min; 110% ~ 130%: 30sec; >130% : 10sec	
Current Crest Ratio		3:1 max.	
Harmonic Distortion		$\leq$ 3 % THD (Linear Load) $\leq$ 5 % THD (Non-linear Load)	
Transfer Time	AC to Battery	0 ms	
	Inverter to Bypass		
Efficiency			
AC Mode		> 92%	> 93%
Battery Mode		> 90%	> 91%
Battery			
Standard Model	Battery Type	12 V / 7 Ah x16	12 V / 9 Ah x16
	Recharge Time	9 hours recovery to 90% capacity	
	Charging Current	Default: 1 A $\pm$ 10% Max.: 1A, 2A (adjustable)	
	Charging Voltage	218.4V $\pm$ 1%	
Long-run Model	Battery Type	Depending on applications	
	Numbers	16-18-20	
	Charging Current	Default: 4A $\pm$ 10% max.:1A, 2A, 4A, 6A (Adjustable, 6A is only available for 16 pcs batteries)	
	Charging Voltage	218.4V $\pm$ 1% [based on 16pcs batteries]	
Physical			
Standard Model with bat.	Dimension, D x W x H	442x 190 x 688 (mm)	
	Net Weight (kgs)	61	66
Long-run* Model	Dimension, D x W x H	442x 190 x 318(mm)	
	Net Weight (kgs)	12	16
Environment			
Operation Temperature		0 ~ 50°C (battery life cycle will be shorten when temperature is above 25°C)	
Operation Humidity		<95 % and non-condensing	
Operation Altitude**		<1000 m	
Acoustic Noise Level		Less than 55dB @ 1 Meter	Less than 58dB @ 1 Meter
Management			
Smart RS-232 or USB		Supports Windows® 2000/2003/XP/Vista/2008, Windows® 7/8, Linux, Unix, and MAC	
Optional SNMP		Power management from SNMP manager and web browser	

\*Product specifications are subject to change without further notice to third parties. © ARTronic Elektronik San. Müm. Tic. A.S.

\* Derate capacity to 60% of capacity in CVCF mode and to 90% when the output voltage is adjusted to 208VAC.

\*\*If the UPS is installed or used in a place where the altitude is above than 1000m, the output power must be derated one percent per 100m.



# ARTronic®

The art of electronics

Phone: +90 (216) 365 82 21 / Fax: +90 (216) 592 44 40

artronic@artronic.com.tr [www.artronic.com.tr](http://www.artronic.com.tr)