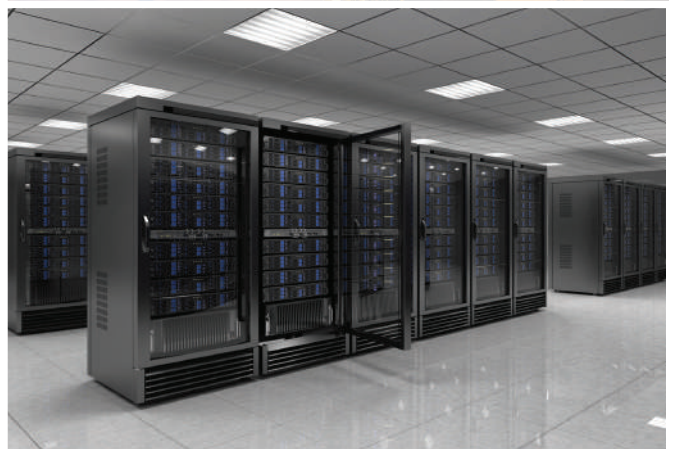


## On Line Uninterruptible Power Supply

### ARTon Modular Series 30-210 kVA



### Specifications

- Output power factor 1
- High scalability up to 7 + 1 modules
- Ease of installation and internal maintenance bypass
- Flexible battery configuration between 32 ~ 40 pieces
- Adjustable charging current
- High overload capability
- Graphic 5.7" LCD design for easy management
- N+1 or N+R Parallel Redundancy for power guarantee
- Built-in maintenance bypass switch for easy maintenance without interruption
- High efficiency double conversion online UPS



General Application Areas:



Finance



Medical



Industry



Datacenter

# ARTon Modular Series 30-210 kVA Technical Specifications

MODEL	Moduler 30U-90	Moduler 42U-120	Moduler 30U-120	Moduler 30U-180	Moduler 42U-210
Phase	3-phase in / 3-phase out				
Cabinet Capacity*	90 KW	120 KW	120 KW or 80 KW	180 KW or 120 KW	210 KW
Battery Type	Built-in Battery		External Battery		
Power Module Capacity	30KVA/30KW		30KVA/30KW or 20KVA/20KW		30KVA/30KW
Max. Power Module No.	3	4	4	6	7+1
Max Battery Set No.**	3	5	-	-	-
<b>Input</b>					
Nominal Voltage	3 x 380VAC/400VAC/415VAC (3Ph+N)				
Voltage Range	305 - 478 VAC at 100% load; 208 - 304VAC at < 70% load				
Nominal Frequency	50/60Hz (Auto Sensing)				
Frequency Range	40Hz ~70Hz				
Power Factor	> 0.99 @ 100% Load , > 0.98 @ 50% Load				
Harmonic Distortion (THDi)	< 3% @ 100% linear load				
<b>Output</b>					
Nominal Voltage	3 x 380VAC/400VAC/415VAC (3Ph+N)				
Voltage Regulation (Steady state)	≤ ± 1% Typical (balanced load) ; ≤ ± 2% Typical (unbalanced load)				
Voltage Regulation (Transient)	≤ ± 5% Typical, response time < 100ms				
Nominal Frequency	50/60Hz				
Frequency Range (Synchronized)	46Hz - 54Hz or 56Hz - 64Hz				
Overload Capability	1 hour for 110%, 10 mins for 120%,; 1 min for 150%, 200ms for >150%				
Harmonic Distortion	≤ 1% THD (Linear Load) ; ≤ 4% THD (Non-linear Load)				
Efficiency System / Module	Up to 94,5% / > 96% for > 50% load, > 95% for 35-50% load				
<b>Battery / Charger</b>					
Nominal Voltage	+/- 216V (12V x 36 pcs), 2x18 block with 3 wire connection				
Maximum / Minimum Voltage	+/- 240V (12V x 40 pcs), 2x20 block with 3 wire connection, +/- 192V (12V x 32 pcs), 2x16 block with 3 wire connection				
Charger Ripple	< 1% for voltage, < 5% for current				
Float Charging Voltage	2.25V / Cell				
Boost Charging Voltage	2.35V / Cell				
Temperature Compensation	Yes, -3mV / °C / cell				
Maximum Charging Current	8A for each power module (User-Adjustable)				
<b>Physical</b>					
Cabinet Dimension (D x W x H) mm	1100 x 600 x 1475 [30U]	1100 x 600 x 2010 [42U]	1100 x 600 x 1475 [30U]	1100 x 600 x 1475 [30U]	1100 x 600 x 2010 [42U]
Net Weight (Kg)	675	932	335 or 333	437,5 or 434,5	7 Power Modules: 514,5 8 Power Modules: 549
Power Module	440 x 132(3u) x 650 mm and 35 kg for 20/30 kVA modules				
Battery Module	735 x 107 x 155 mm and 26 kg with 10 pcs. of 12V 9Ah batteries				
<b>Environment</b>					
Operation Temperature	0 ~ 40 °C				
Relative Humidity	0 ~ 95% non-condensing				
Altitude	<1000m for Nominal power, over 1000 meter power derated 1% for every 100 meter				
IP Class	IP 20				
<b>Management</b>					
Smart RS-232 / USB	Supports Windows <sup>2</sup> 2000/2003/XP/Vista/ 2008, Windows <sup>2</sup> 7/8, Linux, Unix, and MAC				
Optional SNMP	Power management from SNMP manager and web browser				
<b>Standards</b>					
Safety	IEC/EN 60950-1, IEC/EN 62040-1				
EMC & Performance	IEC/EN 62040-2 Category C3, EN61000 -4-2, 3,4,5,6,8 EN 62040-3				

\*Product specifications are subject to change without further notice to third parties. © ARTronic Elektronik San. Müm. Tic.A.S.

\*When temperature is above 30°C , the output power factor will be de-rated, 0,9 at 31°C:-35°C and 0,8 at 36°C:-40°C .

\*\* One battery module contains 10 pcs of 12V/7Ah or 12/9Ah sealed lead acid batteries in one tray. One complete battery set contains 4 battery modules.

# ARTronic®

The art of electronics

Phone: +90 (216) 365 82 21 / Fax: +90 (216) 592 44 40

artronic@artronic.com.tr [www.artronic.com.tr](http://www.artronic.com.tr)